

A photograph of several black graduation caps with gold tassels being held up by students' hands. The background is a blurred outdoor scene with green trees and a light-colored building. A faint geometric pattern of white lines is visible on the left side of the image.

RE-IMAGINING SCHOOLS AFTER COVID-19

CONSIDERATIONS FOR DESIGN AND OPERATION





Agenda

1. GPD Overview
2. Procedural Aspects
3. Physical Distancing Aspects
4. No Touch Aspects
5. How GPD Can Help
6. Resources

A photograph of several black graduation caps with gold tassels being held up by students' hands against a background of green foliage. The image is overlaid with a semi-transparent green filter.

GPD OVERVIEW

GPD Overview

59+ Years in the Industry

70+ professionals dedicated to K-12

*Full-Service A/E Firm,
Employee-owned.*



GPD Leadership



Mark Salopek

Project Principal

36 years in K-12 market

Completed 100+ school projects totaling over \$1B in K-12 construction



Rodwell King

Design Architect /
Educational Planner

43 years experience
dedicated to K-12 design
Accredited Learning
Environments Professional



Aaron Rodebaugh

Project Manager

19 years of K-12 design
experience

Experience with both new
school design and existing
school renovations

A photograph of several graduates in black gowns holding up their black mortarboard caps with gold tassels. The image is overlaid with a semi-transparent green filter. The text 'PROCEDURAL ASPECTS' is centered in white, uppercase letters.

PROCEDURAL ASPECTS

Schools During the COVID-19 Pandemic

Should you consider opening?

- ✓ Will reopening be consistent with applicable state and local orders?
- ✓ Is the school ready to protect children and employees at higher risk for severe illness?
- ✓ Are you able to screen students and employees upon arrival for symptoms and history of exposure?

ALL
YES

Are recommended health and safety actions in place?

- ✓ Promote healthy hygiene practices such as hand washing and employees wearing a cloth face covering, as feasible
- ✓ Intensify cleaning, disinfection, and ventilation
- ✓ Encourage social distancing through increased spacing, small groups and limited mixing between groups, if feasible
- ✓ Train all employees on health and safety protocols

ALL
YES

Is ongoing monitoring in place?

- ✓ Develop and implement procedures to check for signs and symptoms of students and employees daily upon arrival, as feasible
- ✓ Encourage anyone who is sick to stay home
- ✓ Plan for if students or employees get sick
- ✓ Regularly communicate and monitor developments with local authorities, employees, and families regarding cases, exposures, and updates to policies / procedures
- ✓ Monitor student and employee absences and have flexible leave policies and practices
- ✓ Be ready to consult with the local health authorities if there are cases in the facility or an increase in cases in the local area

ALL
YES

OPEN AND
MONITOR

ANY NO



ANY NO



ANY NO





PROCEDURAL ASPECTS

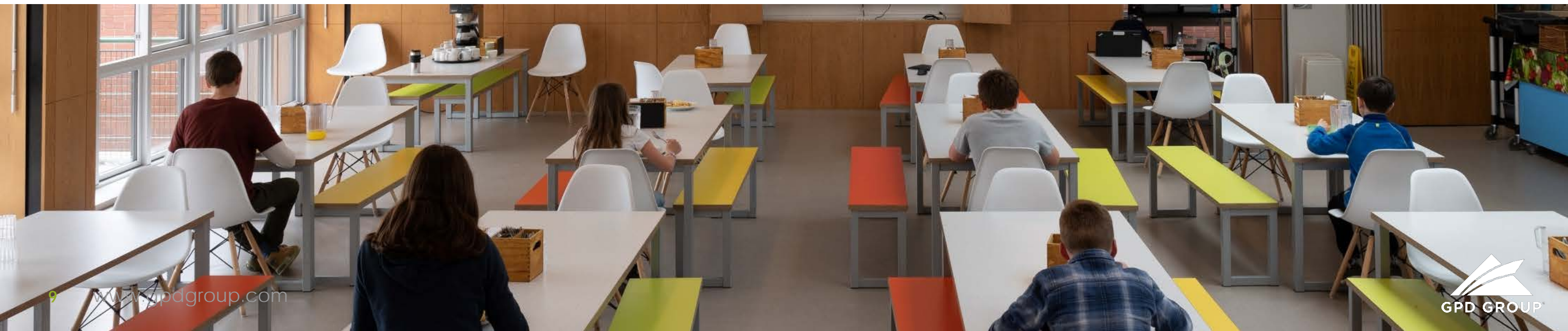
School Management

- Follow CDC guidelines, federal, state and local mandates or recommendations
- Provide social, emotional and practical help for students
- No assemblies, sports or parent-teacher conferences
- Adjust school calendars
- Distribute lunch to students in classrooms

PROCEDURAL ASPECTS

Student Education

- Have teachers move classes instead of students
- Change from conventional schedules to block schedules
- Implement “flipped classroom” instruction model
- “One Room Schoolhouse” model with a teacher teaching multiple subjects, perhaps utilizing Project-Based Learning to accomplish
- Possibly utilize “looping”
- Use of Independent Education Plans (IEP’s) with students on the same plan being in the building at the same time
- Remote student-teacher interaction (teachers that are age 55+ might be more comfortable teaching remotely)
- Stagger schedules/increase length of school day
- Reduce number of students in the building at any one time
- First to resume classes should be:
 - Early learners (Kindergarten & Grade 1)
 - Students that need help
 - Students that don’t have technology at home
 - Seniors



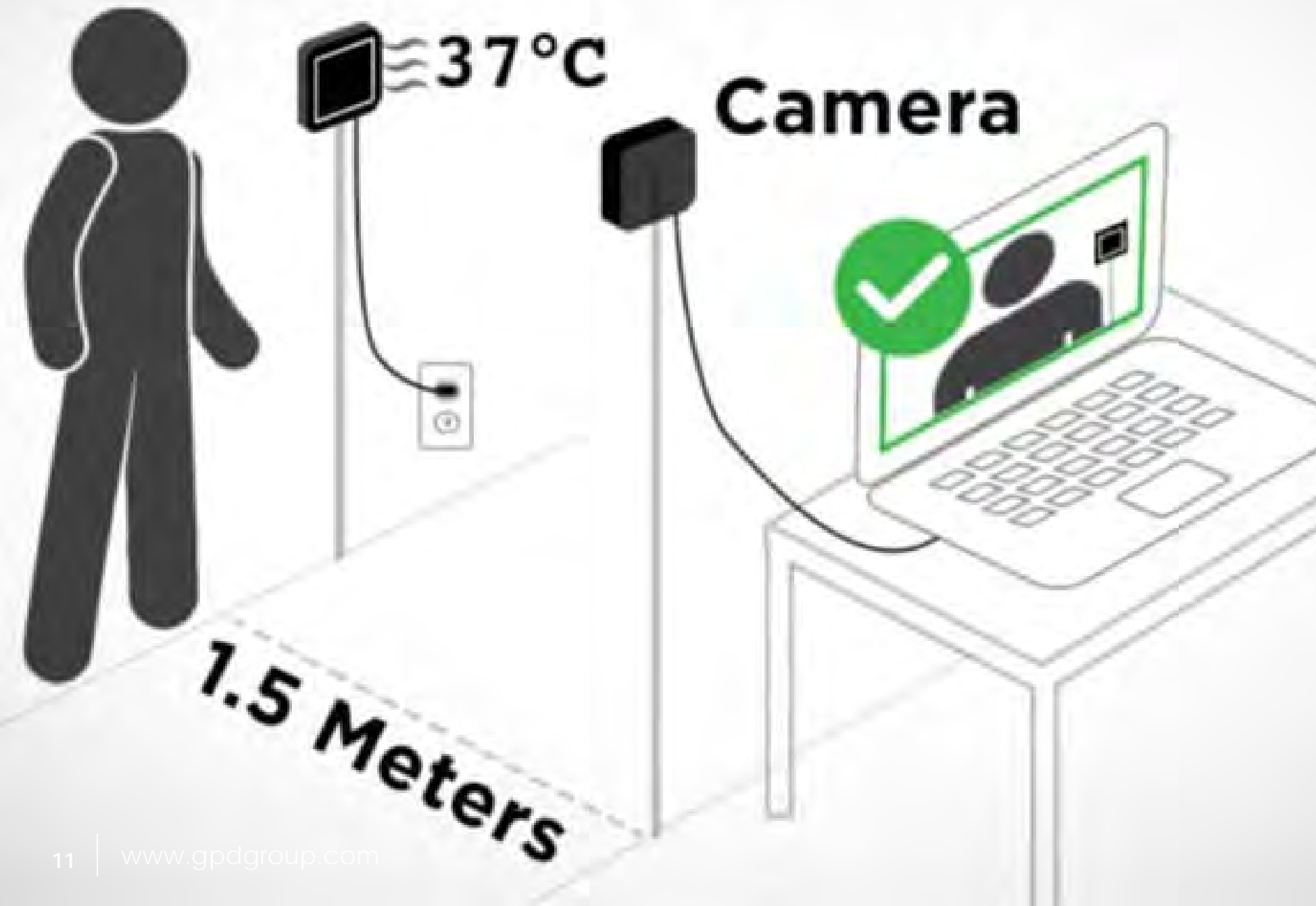
PROCEDURAL ASPECTS

Important Steps

- Engage stakeholders in the “return” discussion
- Ensure equity
- Ascertain availability of substitute teachers, particularly with regard to ages (55+ might not be available)
- Possibly provide childcare for teachers’ children



FIXED HEAT SOURCE



PROCEDURAL ASPECTS

Cleaning

- Follow EPA, CDC, and other government-approved guidelines, recommendations, and directions.
- Increase frequency of cleaning restrooms:
 - Grab bars
 - Toilet paper dispensers
 - Paper towel dispensers
- Use hand-held UVC wands.
- Flash restrooms with UVC disinfection when empty.
- Provide trash containers near entrances/exits, elevators, and other common areas.

PROCEDURAL ASPECTS

Vendors

- Do not permit vendors to send staff to your property who may be showing signs of illness or have been in contact with a confirmed case of COVID-19.
- Identify back-up vendors where possible in case of personnel shortages or supply chain interruptions.
- Re-negotiate or re-bid service contracts to include new requirements for staffing or services; be sure to consider union requirements and restrictions.





PROCEDURAL ASPECTS HVAC

- During low- or no-occupancy and prior to building re-entry, run HVAC equipment in building
- Continue normal and regular HVAC maintenance, including filter changes.
- Check for any other recommended maintenance, changes in maintenance schedules, or filter or system upgrades or changes.
- If possible, increase exhaust and infusion of outside air for re-entry and perhaps for several weeks following re-entry.
- Consult ASHRAE guidelines to reduce COVID-19 transmission and follow CDC guidance where applicable.

PROCEDURAL ASPECTS

Water

- During low- or no-occupancy and prior to building re-entry, operate water systems, toilets, faucets, etc. on a regular basis to avoid the accumulation of biofilm.
- Flush and clean systems before opening.
- Check P-traps to confirm water seals have not dried out due to lack of water flow.
- Continue to monitor and service all water systems.



FIXED HEAT SOURCE



PROCEDURAL ASPECTS

Fever Scanning

- Consider installing an infrared fever scanning system in the lobby.



A photograph of several graduation caps (mortarboards) being tossed into the air by graduates. The image is overlaid with a semi-transparent green filter. The text "PHYSICAL DISTANCING ASPECTS" is centered in white, uppercase letters.

PHYSICAL DISTANCING ASPECTS

PHYSICAL DISTANCING ASPECTS New Designs

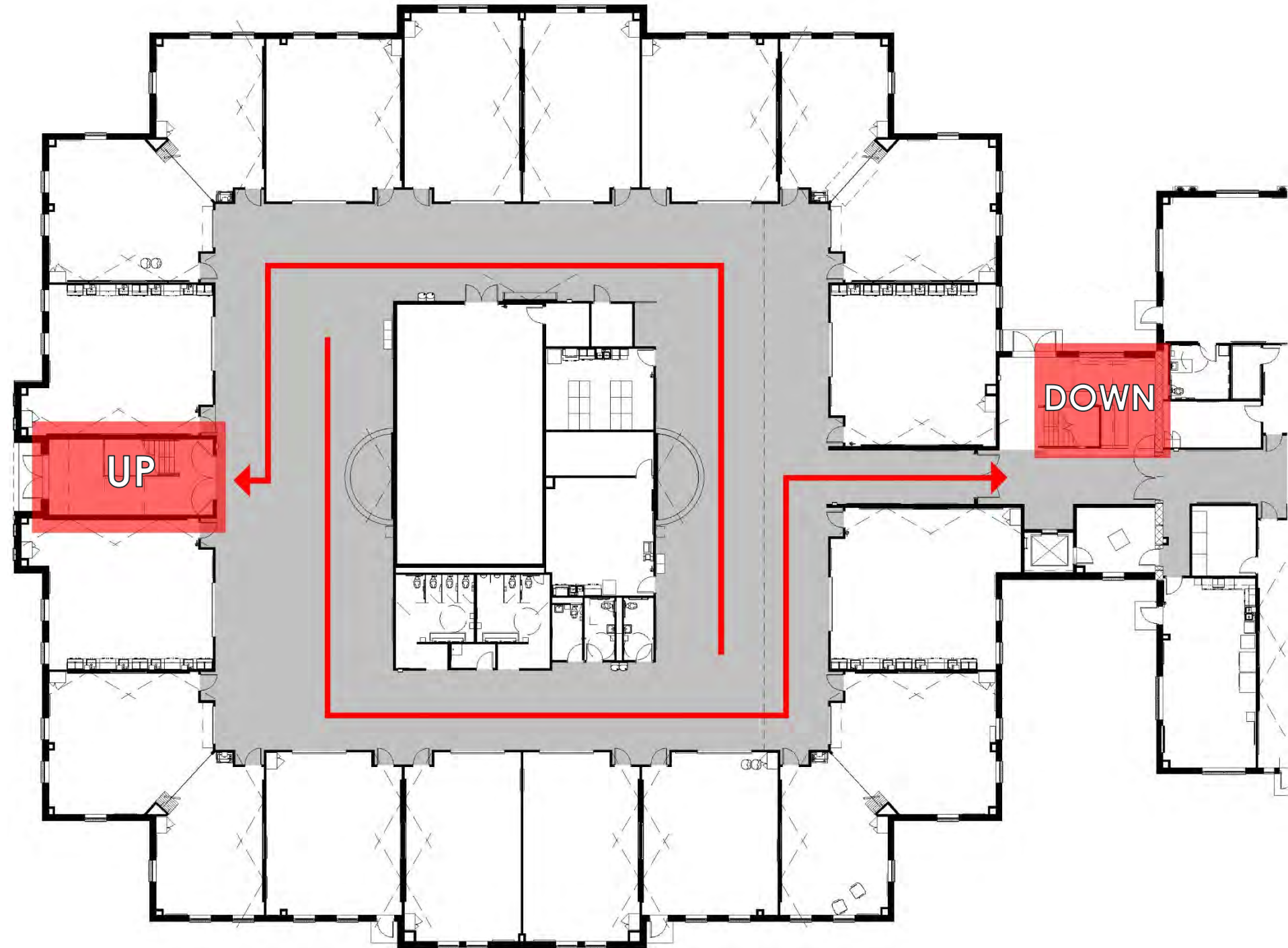
- Eliminate hallways for student traffic (collaborative learning areas are ideal).



PHYSICAL DISTANCING ASPECTS

Corridors & Stairwells

- Designate “up” and “down” stairwells
- Designate direction of traffic flow through corridors





PHYSICAL DISTANCING ASPECTS Student Storage

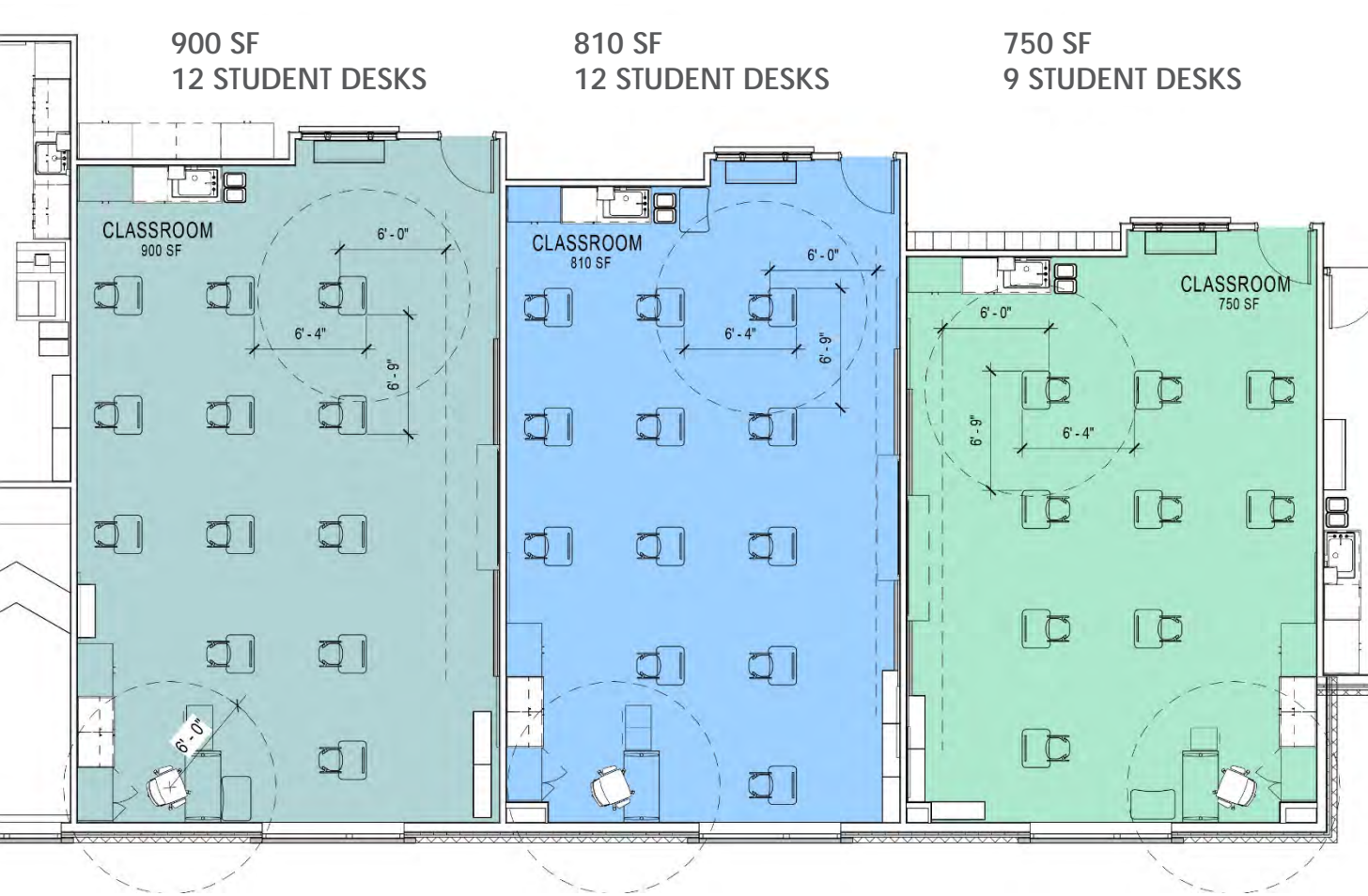
- Re-evaluate what storage space is actually needed with the (rapid) transition to tablets and Chrome Books.
- Lockers: utilize open cubbies to eliminate touching of locks and handles.

PHYSICAL DISTANCING ASPECTS

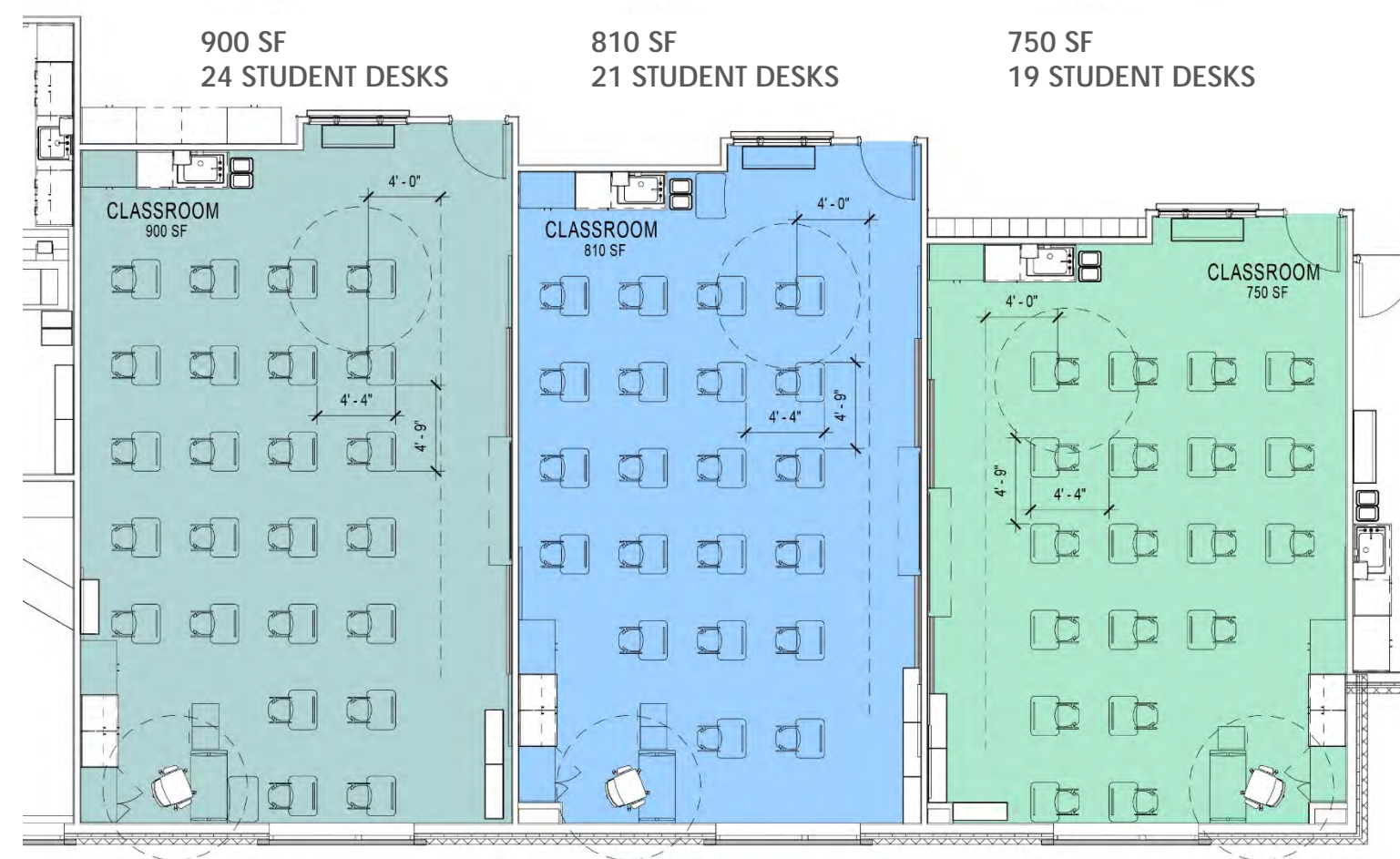
Lockers

- Conduct a survey to ascertain locker usage.
- If possible, consider permanently locking some lockers to create space between.





Typical Classroom with 6-foot Physical Distancing



Typical Classroom with 4-foot Physical Distancing

PHYSICAL DISTANCING ASPECTS

Furniture Selection

- Desks instead of tables to increase floor space between students.

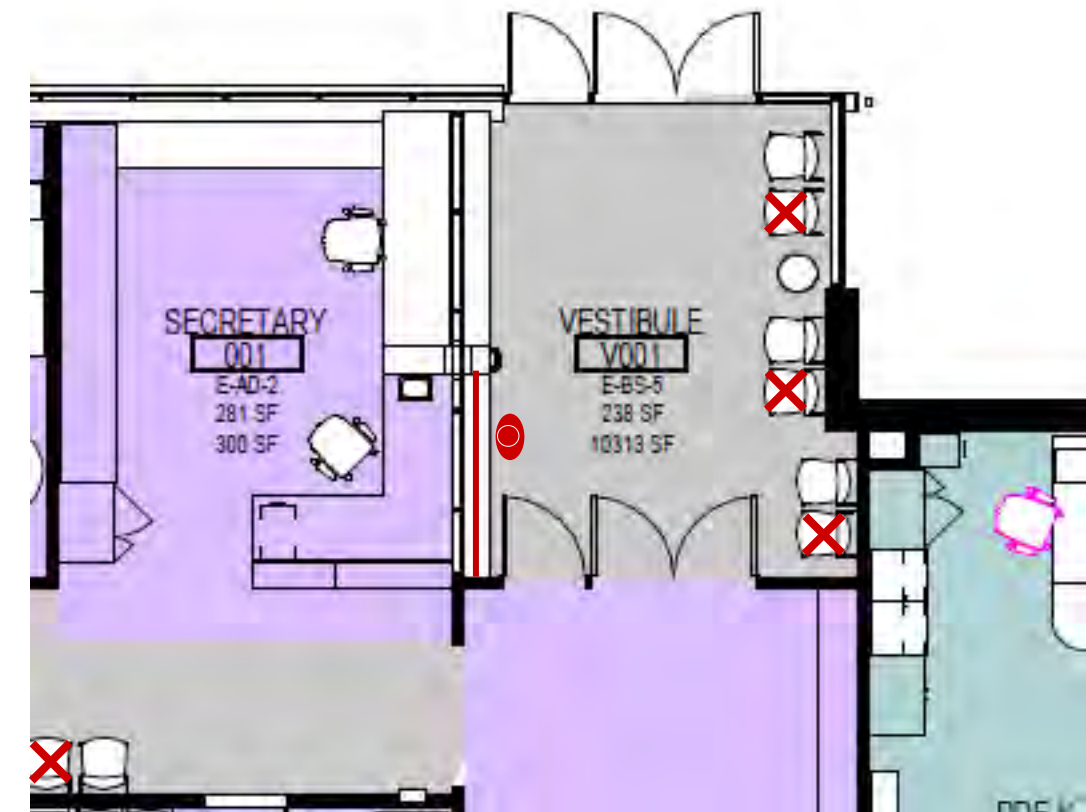




PHYSICAL DISTANCING ASPECTS

Screening

- Provide plexiglass or glass screening for secretaries.



DESK SHIELD



COUNTER SHIELD



PHYSICAL DISTANCING ASPECTS

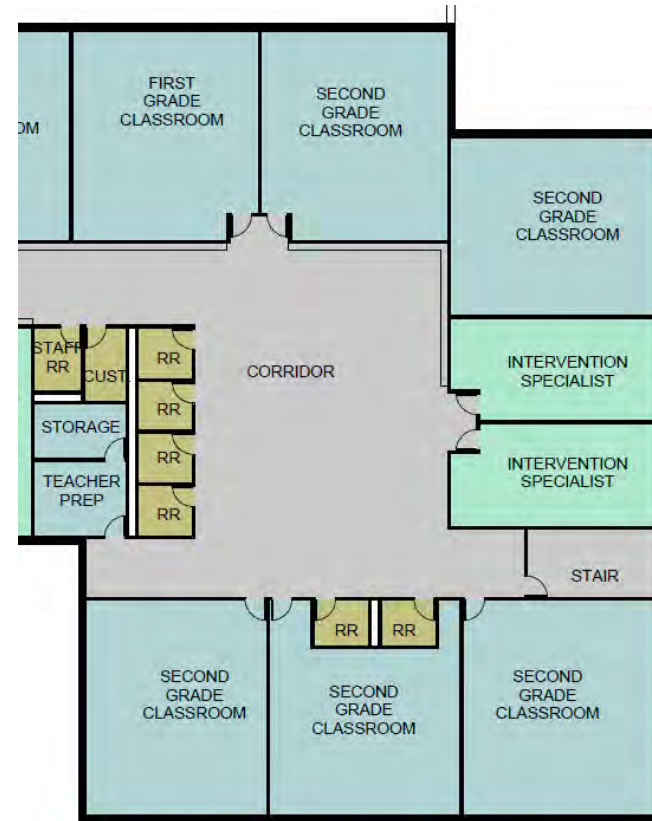
Screening

- Installing physical setups, such as sneeze and cough guards, to protect your staff, and portioned work stations if possible.



PHYSICAL DISTANCING ASPECTS Restrooms

- Consider single-use toilet facilities instead of gang-style bathrooms.

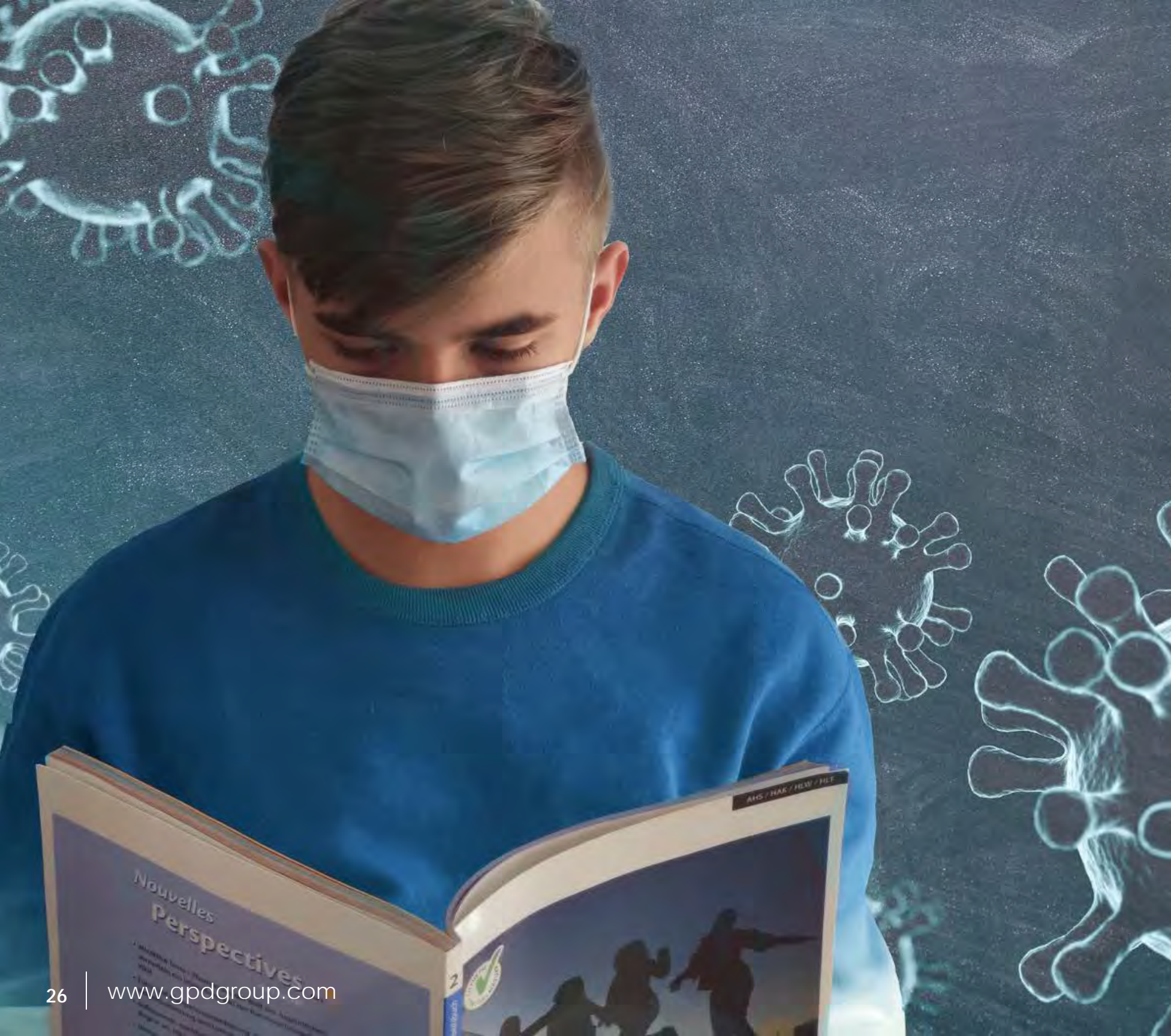




PHYSICAL DISTANCING ASPECTS Signage

- Provide signage (magnetic with removal inserts).





Physical Distancing Aspects

- Provide larger than typical space for the clinic to ensure adequate distancing between beds.
- Consider a push-button release for exterior main entry door, with an automatic operator, for public access to the building during school hours. This needs to be integrated with the school's security strategy.
- Provide personal protective equipment for staff where necessary (food service, custodial, special needs teachers, etc.).

A photograph of several graduates holding up their black mortarboard caps with gold tassels. The image is overlaid with a semi-transparent green filter. The text "NO TOUCH ASPECTS" is centered in white, uppercase letters.

NO TOUCH ASPECTS

NO TOUCH ASPECTS

Utilizing items that require less maintenance
(for example, large capacity toilet roll dispensers)
or have less surface area to transmit germs.

Toilet Paper Dispensers

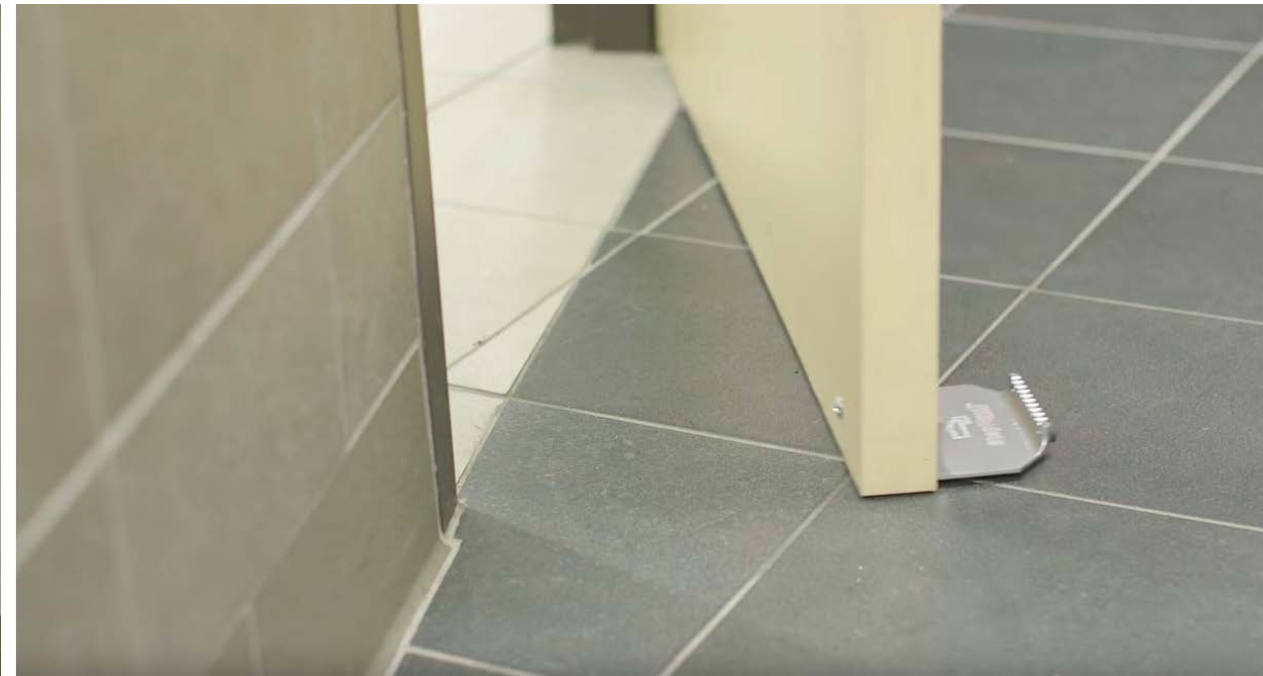
- Enclosed, easy to clean large format toilet paper dispensers



NO TOUCH ASPECTS

Doorways

- StepNPull door openers (adjust door closer force to ensure ease of operation).



NO TOUCH ASPECTS

Sensor-Operated Faucets



Sensor-Operated Soap Dispensers



NO TOUCH ASPECTS

Sensor Operated Hand Sanitizer

- Add wall-mounted, sensor-operated hand sanitizers in all classrooms adjacent to the doors (especially at elementary schools in order to reduce usage of hand sinks in classrooms).
- Add wall-mounted, sensor-operated hand sanitizers and/or wipes in all locations where there might be human contact with equipment (copiers, printers, etc.).



NO TOUCH ASPECTS

Sensor-Operated Flush Valves on Toilets



Sensor Light Switches to Replace Manual Switches



NO TOUCH ASPECTS

Sensor-Operated Paper Towel Dispensers



Sensor-Operated Hand Dryers



NO TOUCH ASPECTS

Sensor-Operated Door Openers that Integrate with Building Security



NO TOUCH ASPECTS

Sensor-Operated Bottle Fillers to Replace Drinking Fountains



How GPD Can Help

Discovery



- Kickoff meeting
 - Align on expectations, deliverables and schedules
 - Identify prioritization areas
 - Review building documentation and use information
 - Review state or other mandated guidelines
- Discuss the project plan

Building Evaluation



- Evaluate current spatial layouts (physically walk the space / plan review)
- Review materials and finishes, furniture and work spaces
- Compare to state COVID-19 guidelines
- Present findings and recommendations
- Develop prioritized solution implementation plan

Implementation



- Documentation of solution recommendations
- Sourcing and vendor recommendation
- Bid coordination and management
- Implementation management (project management and construction administration)
- Final inspection and validation

Through your OSC membership, GPD, as an approved OSC consultant, can begin your building evaluations immediately.



OHIO SCHOOLS COUNCIL
Saving Schools Dollars...

CONTACT:

Mark Salopek, Project Principal
330.802.6265
msalopek@gpdgroup.com

Rodwell King, Design Architect / Educational Planner
330.958.3940
rking@gpdgroup.com

Resources

American Society of Heating, Refrigerating, and Air-Conditioning Engineers (ASHRAE)	www.ashrae.org/technical-resources/resources
BOMA International	www.boma.org/coronavirus
Centers for Disease Control	www.cdc.gov/coronavirus
Coronavirus (COVID-19) Resource Center	www.coronavirus.gov
Equal Employment Opportunity Commission	www.eeoc.gov
Federal Emergency Management Agency	www.fema.gov/coronavirus
International Codes Council	www.iccsafe.org
Occupational Safety & Health Administration	www.osha.gov/coronavirus
White House	www.whitehouse.gov/openingamerica
World Health Organization	www.who.int/coronavirus

Q&A

